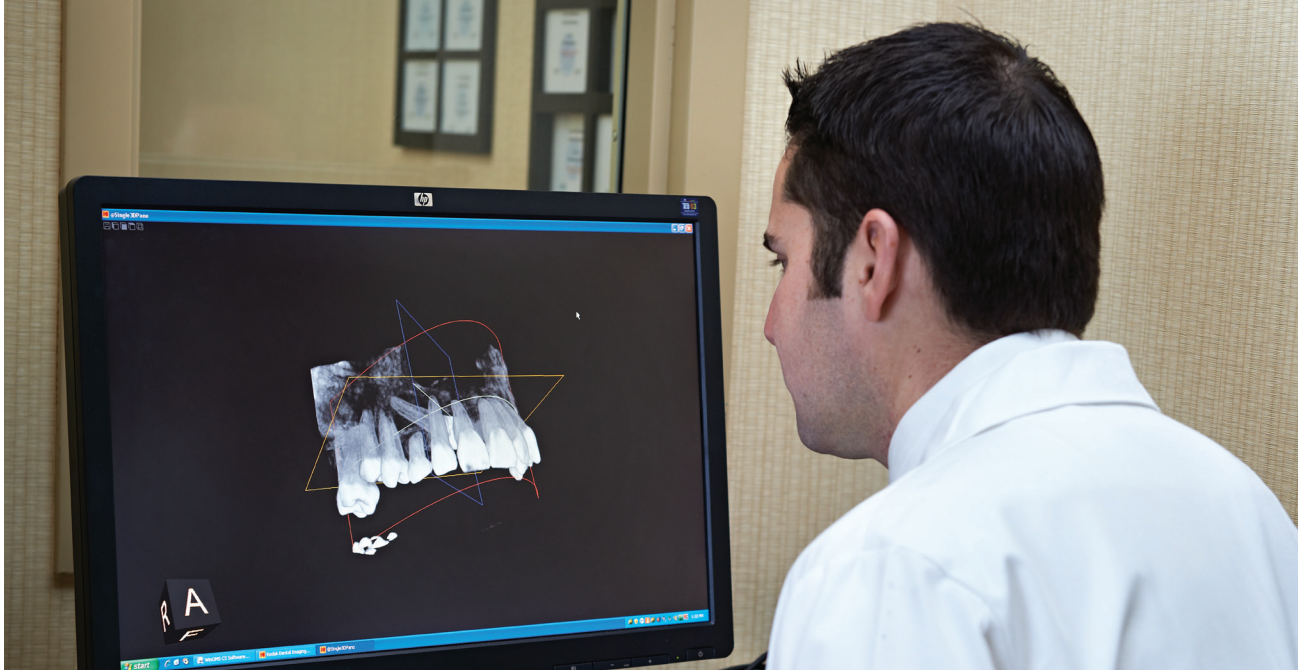


3D IMAGING



Precise Evaluation, Advanced Technology

Our practice prides itself on exceeding the standard of care and staying on the cutting edge of technology. All four of our offices are equipped with state-of-the-art 3D cone beam CT (or CBCT) scanners. These special x-ray machines can generate a 3D rendering of the jaws and teeth to allow our surgeons to evaluate and, if needed, operate with precision.

The CBCT images are similar in quality to a medical-grade CT (or “CAT scan”) but at a fraction of the radiation exposure and cost. Similarly, they only take seconds—as opposed to minutes—to scan a patient. They can also be focused on a small area of the head and neck, such as a single tooth or a few teeth.

On a daily basis, our surgeons utilize our CBCT scanners for many different diagnostic and treatment planning purposes. We frequently utilize these 3D images to evaluate the shape and density of the jaw bone to see if a patient is a candidate for a dental implant or if bone grafting is needed first. Our patients find it very beneficial to review the 3D image of their jaw with their surgeon during the implant planning phase. Our surgeons can also review areas of potential pathology such as a cyst or tumor that may be present in the jaws. Similarly, they can locate the precise position of a nerve or sinus when planning tooth removal or determining the source of an infection.

For surgeon qualifications, please see www.omscmn.com/meet-us/